

Legislation

A disability may be related to age, previous injury or illness, associated with physical, sensory or intellectual disability or mental illness that people were born with or acquired.

The Commonwealth Disability Discrimination Act aims to eliminate as far as possible, discrimination on the grounds of disability; ensure that people with a disability have the same rights to equality before the law as the rest of the community and educate the community about the rights of people with a disability.

The Building Code of Australia covers design for access and mobility and sets standards to be met on building works.

Who can join TAG?

TAG is open to people who are interested in transport, building, community, tourism, information technology and welfare access issues. This includes people with a disability (sight impaired, deaf, mobility problems, mental illness and others), as well as carers, parents, service providers and community members. Tamworth Regional Council has staff represented from the Technical Services and People Services Departments.

How to contact TAG?

If you have an access issue you can contact TAG by phone or by writing to Council detailing the issue.

TAG aims to work with our Council and community to improve access to services.

Tamworth Access Group contacts

Contact the Secretary
Tamworth Community Centre
Darling St Tamworth NSW 2340
PO BOX 555 Tamworth

Phone: 6766 4480

Fax: 6766 9866

Email: trc@tamworth.nsw.gov.au



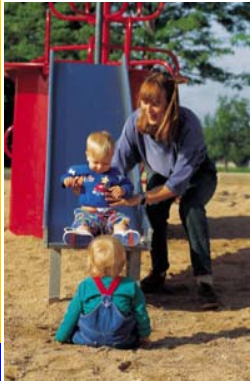
Tamworth Access Group



Tamworth Regional Council

*Working together
for a safe and
accessible
community.*

What is the Tamworth Access Group? TAG



The Tamworth Access Group or TAG, is a working group of Tamworth Regional Council that consists of community representatives,

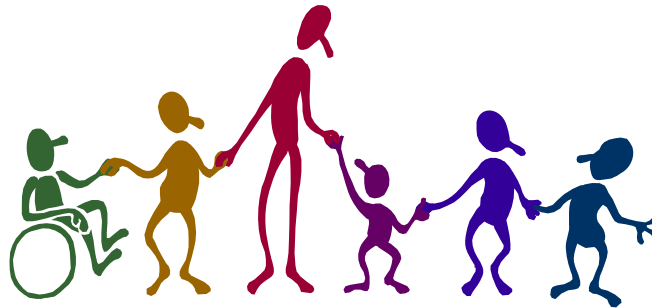
Council workers and interested service providers.

The aim of TAG is to work towards the realization of a safe and accessible community for all. This benefits people with a disability, parents with young children, wheeled walkers, people carrying objects, people with electric scooters and the safety of the general community.

Accessibility

An accessible community is one in which all facilities and services are open and available to people with disabilities, providing them with the same opportunities, together with the rights and responsibilities enjoyed by all others in the community.

Such access includes the built environment (access to buildings) as well as transportation, communication and technological systems, employment practices, Occupational Health and Safety, access to information, recreational and social facilities and services and complaints procedures.



How does TAG achieve access?

TAG meets monthly to discuss any access issues raised by the public or its members. TAG discusses and makes recommendations to Tamworth Regional Council on access issues that relate to Council responsibilities. This will then be discussed. TAG will contact any business or service in the city about access issues if necessary to lobby for improved services. TAG also has plans for special projects each year.

These may include:

- Access Guide
- Mobility Map
- Disabilities Expo
- Promotion of access, Videos, Media releases
- Disabled Parking improvements
- Information on access to buildings, ramps, seating, signage, tactile markings, hoists.